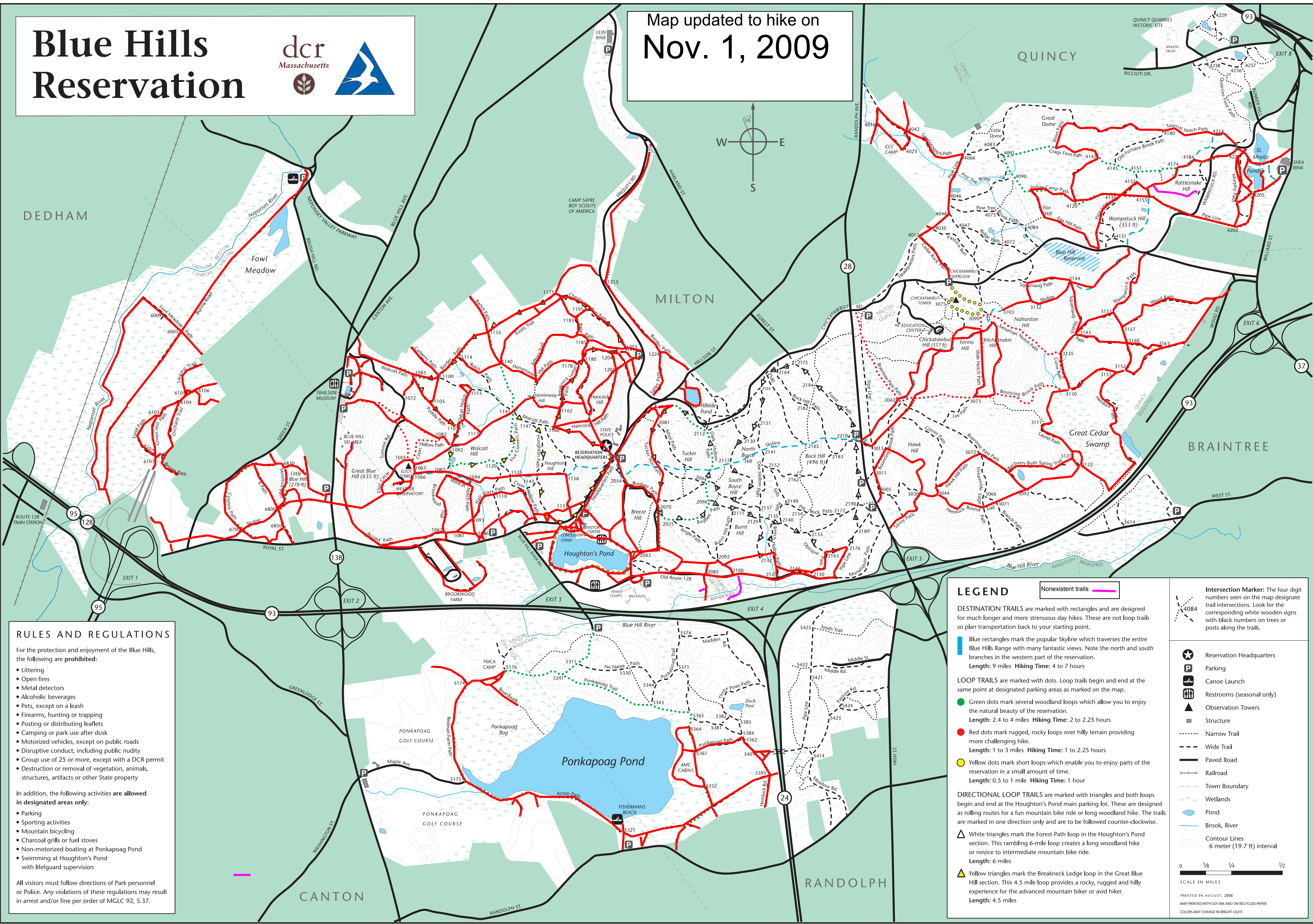
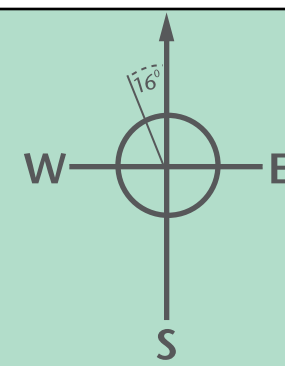


Blue Hills Reservation



Map updated to hike on
Nov. 1, 2009



RULES AND REGULATIONS

For the protection and enjoyment of the Blue Hills, the following are prohibited:

- Littering
- Open fires
- Metal detectors
- Alcoholic beverages
- Pets, except on a leash
- Firearms, hunting or trapping
- Posting or distributing leaflets
- Camping or park use after dusk
- Motorized vehicles, except on public roads
- Disruptive conduct, including public nudity
- Group use of 25 or more, except with a DCR permit
- Destruction or removal of vegetation, animals, structures, artifacts or other State property

In addition, the following activities are allowed in designated areas only:

- Parking
- Sporting activities
- Mountain bicycling
- Charcoal grills or fuel stoves
- Non-motorized boating at Ponkapoag Pond
- Swimming at Houghton's Pond with lifeguard supervision

All visitors must follow directions of Park personnel or Police. Any violations of these regulations may result in arrest and/or fine per order of MGLC 92, S.37.

LEGEND

- Nonexistent trails
 - DESTINATION TRAILS are marked with rectangles and are designed for much longer and more strenuous day hikes. These are not loop trails so plan transportation back to your starting point. Length: 9 miles Hiking Time: 4 to 7 hours
 - LOOP TRAILS are marked with dots. Loop trails begin and end at the same point at designated parking areas as marked on the map. Length: 2.4 to 4 miles Hiking Time: 2 to 2.25 hours
 - Green dots mark several woodland loops which allow you to enjoy the natural beauty of the reservation. Length: 1 to 3 miles Hiking Time: 1 to 2.25 hours
 - Red dots mark rugged, rocky loops over hilly terrain providing more challenging hike. Length: 0.5 to 1 mile Hiking Time: 1 hour
 - Yellow dots mark short loops which enable you to enjoy parts of the reservation in a small amount of time. Length: 0.5 to 1 mile Hiking Time: 1 hour
 - DIRECTIONAL LOOP TRAILS are marked with triangles and both loops begin and end at the Houghton's Pond main parking lot. These are designed as rolling routes for a fun mountain bike ride or long woodland hike. The trails are marked in one direction only and are to be followed counter-clockwise. Length: 6 miles
 - White triangles mark the Forest Path loop in the Houghton's Pond section. This rambling 6-mile loop creates a long woodland hike or novice to intermediate mountain bike ride. Length: 6 miles
 - Yellow triangles mark the Breakneck Ledge loop in the Great Blue Hill section. This 4.5 mile loop provides a rocky, rugged and hilly experience for the advanced mountain biker or avid hiker. Length: 4.5 miles
 - Reservation Headquarters
 - Parking
 - Canoe Launch
 - Restrooms (seasonal only)
 - Observation Towers
 - Structure
 - Narrow Trail
 - Wide Trail
 - Paved Road
 - Railroad
 - Town Boundary
 - Wetlands
 - Pond
 - Brook, River
 - Contour Lines 6 meter (19.7 ft) interval
- Intersection Marker: The four digit numbers seen on the map designate trail intersections. Look for the corresponding white wooden signs with black numbers on trees or posts along the trails.
- 0 1/8 1/4 1/2
SCALE IN MILES
- PRINTED IN AUGUST, 2008
MAP PRINTED WITH SOY INK AND ON RECYCLED PAPER.
COLORS MAY CHANGE IN BRIGHT LIGHT.