

18 Blue Hills History – A Staycation Option for Over 100 Years.

In these pandemic times, many folks have lowered their vacation plans, and “Staycations” are in. We'll, you aren't the first to be planning local 'Getaways' and at one point 'the Blue Hills' was the destination of choice for many... so if your plans include a trip to the Blue Hills, take comfort in knowing you aren't the first one to vacation there.



This 1907 brochure provided all the information you would have needed to plan your Blue Hills excursion. It provides the "Summer Schedule, 1907" for the Blue Hills Street Railway Company, as well as connecting information.

And once you knew 'How to get there.' You weren't left on your own, 6 of the 10 pages are devoted to the features of the Blue Hills, in case you needed any convincing that it should be your destination of choice.

Band Concert in New Band Stand, Saturdays at 4 p. m. (If stormy, will be held Sunday.)

BLUE HILL STREET RAILWAY CO.
SUMMER SCHEDULE, 1907

(WEEK DAYS)

South-Bound (Read Down)		STATIONS	North-Bound (Read Up)	
A.M	A.M		A.M	A.M
6.05	6.35	Dudley St. Elevated	7.05	7.35
6.35	7.05	Mattapan Square	6.40	7.10
6.50	7.20	Blue Hill Entrance	6.20	6.50
6.54	7.24	*Blue Hill Street	6.16	6.46
6.58	7.28	†Ponkapoag P. Office	6.12	6.42
7.16	7.46	‡Canton	5.54	6.24
7.25	7.55	†East Sharon	6.16	6.46
7.42	8.12	Stoughton	6.00	6.30

‡Nearest point to Summit. Change for Readville.
*Nearest point to Houghton's Pond. †Nearest point to Ponkapoag Pond. ‡Change for Norwood. †Change for Sharon

The above schedule gives through cars only. Intermediate trips are run between Dudley Street Terminal and Mattapan every ten minutes, and between Mattapan and Blue Hill every fifteen minutes pleasant afternoons. Sunday first car leaves terminals one hour and thirty minutes later.

Fare from Boston to Mattapan		.05
MATTAPAN TO		
Blue Hill Entrance	}	.05
Readville		
Blue Hill Street		
Ponkapoag P. O.		
Canton	}	.10
East Sharon		
Norwood	}	.15
Sharon		
Stoughton		
Broekton		.25

SUNDAYS AND HOLIDAYS

Cars run between Dudley Street Terminal and Mattapan every three minutes, and between Mattapan and Blue Hill every five minutes. Between Mattapan and Stoughton every fifteen minutes.

Subject to change without notice

SPECIAL CAR .

Special or ordinary open or closed cars may be chartered at reasonable rates for picnics or excursion parties to the Blue Hills from all points in Eastern Massachusetts. For terms apply to the Superintendent of Transportation of The Boston Elevated Company, or Blue Hill Street Railway Company, Canton Junction.

TROLLEY INFORMATION BUREAU

306 Washington St. and 12 Pearl St., Boston

New England St. Railway Club

JOHN J. LANE, Secretary

Booklets, Time Tables and General Information

Information Cheerfully Given. Call, Write or 'Phone

NO CHARGE!

The Blue Hill
Street Railway Company

RESERVATION

ROUTE

TO

GREAT BLUE HILL

AND

HOUGHTON'S POND



THE PATH TO THE SUMMIT.

Take any car to

**MATTAPAN
STOUGHTON**

READVILLE (Sundays and Holidays only)

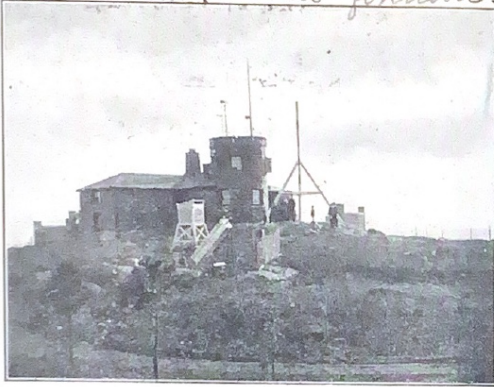
and change for The Blue Hill Street Railway

Take any car to

NORWOOD

and change for Canton and The Blue Hill Street Railway.

Monday Oct. 14. 1907 Mill and I took the trip to Blue Hill from East Milton in the forenoon.



Blue Hill Observatory. Kite Day First Thursday in Each Month.

YING south of Boston about ten miles distant is the Blue Hill range, the most conspicuous feature of the large Reservation owned by the Commonwealth and maintained for the enjoyment of the people. The entire Blue Hill range is seven miles long, extending from Little Blue Hill in Canton, to President's Hill in Quincy. These beautiful hills are all contained in the Reservation embracing 5,000 acres. The view from the summit of Great Blue Hill is the most interesting, and from its variety and general attractiveness the finest, in New England. On the north may be seen



CHARLES ELIOT MEMORIAL BRIDGE. NEAR THE SUMMIT.

Boston Harbor with its many islands, and on a clear evening the lights of Cape Ann, forty miles distant, are visible. As one turns to the east, Hull, Nantasket, Hingham and Weymouth come into view. At the southeast are Plympton and Alden's Hill at Lakeville, the latter twenty-eight miles distant. Almost due south lies the Fall River Stand-pipe, and as one turns to the south west Attleboro and Woonsocket may be seen. Farther north is Great Manadnock, fifty-two miles from Blue Hill, and also numerous other places of interest.

Don't forget to bring your camera as some of the most picturesque scenery in New England



THE PICNIC GROUNDS.

is to be found in the Blue Hill district.

As the sun sets in the evening the view is perhaps the most glorious, the sun gradually sinking below the horizon reflecting crimson rays upon the clouds and sky. As the after-glow gradually fades away the rising moon furnishes new charm until the nightly illumination of the surrounding towns and neighboring country adds new beauty. The light-houses at sea, and the hundreds of street lights of the distant towns and cities, each twinkling like a star, all enhance the splendor, making a picture one never forgets. Picnic parties may be seen in the secluded nooks upon the hill, enjoying the unusual spectacle,

From the base of Blue Hill a broad path of easy ascent winds to the summit, laid out with great care by the Park Commission. All through the reservation are picturesque paths where one can with little difficulty imagine he is in the depths of a forest in Maine.



A COVE AT HOUGHTON'S POND.

At Houghton's Pond are boats, bath-houses, and in beautiful groves people enjoy the shore of the lake for picnics and other amusements.

Visitors desiring to take the mountain climb should leave the car at Blue Hill Street.

This vast natural park may be reached by people from all parts of the metropolitan district by either boarding the cars of the Blue Hill Street Railway Company at Dudley Street, or by making connections with the cars at Mattapan Square. At the foot of Great Blue Hill the Blue Hill Street Railway Company has placed a waiting station for the convenience of the visitors to the Reservation. After leaving the Blue Hill Reservation the cars pass through Canton to Stoughton, connecting at East Sharon with cars for Sharon, where is situated the famous Massapoag Lake. At Stoughton connection may be made for Brockton, where cars may be taken for Plymouth, Taunton, Providence, New Bedford and Newport, and points south.

HOUGHTON'S POND.

No one should leave the Reservation without a visit to Houghton's or Hoosic-Whisick Pond

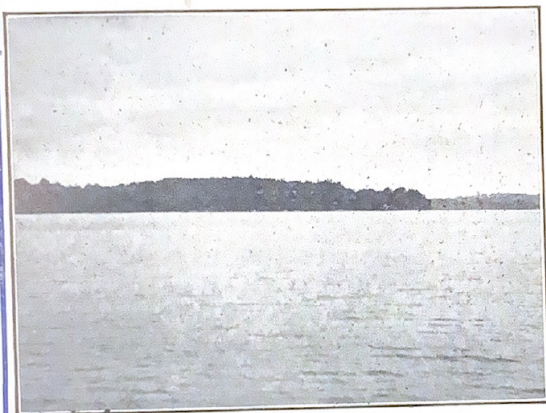
(the Indian name), plainly visible from the summit of Great Blue Hill and reached in a variety of ways. The most picturesque route is to descend the hill by the bridle path to Administration Road, following the latter easterly by "Coon Hollow Path," through "Wild Cat Notch," plainly marked by signs, then continue upon this path to the opening near the pond. Another way, for the more daring pedestrian, is to take the paths leading down the easterly or southerly bluff of the hill, thence along Blue Hill Street to Houghton's Pond. The easiest way is to descend the hill to the passenger shelter and board one of the Blue Hill Street Railway cars going south, carrying you through "Ponkapoag Pass" between Little and Great Blue Hill to Blue Hill Street, where one leaves the car and either walks or takes the barges that run to the pond on Saturday afternoons, Sundays and holidays.



NEAR THE SUMMIT

* The pond was named after Ralph Houghton, an Englishman who fought under Cromwell against the king, and finally settled in this delightful spot, where his descendants occupied the old homestead until it became a part of the Reservation in 1894, when it was razed to the ground. In the early summer, on Sundays and holidays,

the pond is covered with boat-loads of children; while others are bathing and diving in the lake. Boat-houses have been erected on the north shore, and happy families picnic in the cool pine groves which border on the pond. At this season of the year thousands of people leave the heated city to enjoy the quiet stillness of this pleasant body of water and wander through the vast woods surrounding the lake.



PONKAPOAG POND AND PICNIC GROUNDS

PONKAPOAG POND.

This attractive sheet of water is most easily arrived at by taking the cars of the Blue Hill Street Railway to Ponkapoag Postoffice and walking to the pond. Ponkapoag Pond obtains its name from the Ponkapoag tribe of Indians who, in the seventeenth century, occupied the territory covered by the towns of Milton, Canton, Stoughton and Sharon. The Indian chief, Chicatawbut, held full possession over all this country and with warriors hunted game on the shores of the pond. In the present day this pond is probably better known as a resort for picnic parties than any other place in the vicinity of Boston. The magnificent groves along the shore make this an ideal place to spend a day in the country. Boats may be hired for rowing and fishing on the lake, and refreshments purchased at the pavilion on the grounds.



THE ENTRANCE



WILDCAT NOTCH. Between the Summit and Houghton's Pond.



WOLCOTT PINES. Near the Entrance.

So, while you are hiking around the Blue Hills this year, think back 100 years or more, and imagine what your trip would have been like then. Many things have changed over these past 100 years, but at the Blue Hills... many more are quite similar to what our grandparents (and great-grand parents) would have encountered. Enjoy *your* trip to the Blue Hills!

Bob Vogel

(Credit to Joanne Newton for finding and procuring this great brochure.)