



# ANNUAL REPORT

---

Appalachian Mountain Club  
Southeastern Massachusetts Chapter

2024  
EDITION



# Table of Contents

**03**

Chapter Chair Report

**05**

Treasurer's Report

**06**

Biking Report

**08**

Cape Hiking Report

**10**

Communications Report

**12**

Conservation Report

**14**

Diversity, Equity, & Inclusion Report

**15**

Education Report

**16**

Hiking Report

**18**

Membership Report

**19**

Paddling Report

**20**

Skiing Report

**21**

Trails Report

**22**

20s & 30s Report

**23**

2024 Signature Events

**24**

Summary

# Chapter Chair Report

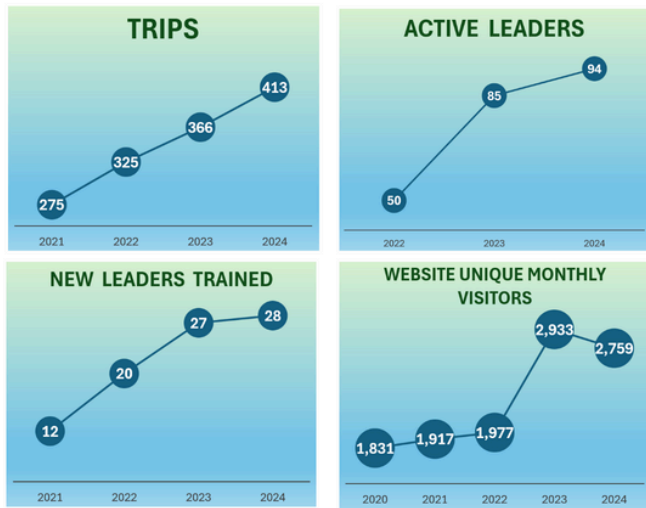
PAUL BROOKES, CHAPTER CHAIR

## WE WELCOME ALL

This has been a great year for our chapter as we experienced another year of growth. The number of trips we lead continues to grow year after year, as do the number of active leaders and new leaders trained.

The number of unique monthly visitors to our website jumped in 2023 and continues to be almost 40% above our average prior to that. All of these are indicators that our chapter is strong.

### The State of the Chapter is Strong!



Screenshot of Chapter metrics

Our Chapter has always been known as a friendly chapter that welcomes all, and our participants and leaders have forged many strong friendships.

We are also known as a chapter that provides a wide range of activities, ensuring that our participants can always find an activity that is “Just Right for Me.” Here are just a few examples from this year:

- For those who are no longer able to be physically active, or those who are active and looking for their next adventure, we offered educational talks both online e.g. learning about climbing Mt. Kilimanjaro,

and in person e.g. an Earth Day panel: A Conversation on Conservation.

- For those looking to get to know us first, we offered an Open House in May, followed by New Member hikes, paddles and bike rides.
- For those new to being outdoors or returning to the outdoors after a significant break we provided an introductory/refresher hiking series.
- For those looking to get conditioned to climb their first mountain we offered a moderate conditioning series, and for those wanting to take their conditioning to the next level, we offered an intermediate conditioning series.
- For those ready to hike, we offered 216 local hikes both on and off the Cape; for those ready to hike the tall mountains, we offered 42 destination hikes; and for those wanting even more challenge, we offered several multi-day backpacks.
- And for those that wanted to hike in the winter, we offered our winter hiking series.

So, when we say that “We Welcome All” we aren’t just referring to age, ethnicity, or gender diversity but we also welcome everyone whether they are just starting out on their outdoor journey or looking for a multi-day adventure.

Having “Activities for All,” is not just about having a wide spectrum of difficulty levels in terms of physicality, but also about providing activities that support our participants across various life stages, and we do a great job with this as well.

Here are some examples (not a complete list):

- For college students and those in their younger year—I know that’s all of us at heart—our 20’s & 30’s Committee offered social event trips to

Continues on page 4

## CHAPTER CHAIR REPORT, CONTINUED

Boston Lights, Jack-O-Lantern Spectaculars, Corn Mazes, WaterFire in Providence, RI, and Musical Bingo.

- For those working (in their career years) we offered evening hikes, easily accessible, from the I-95 corridor, including our Trail Trace the Blue Hills Series and our monthly Full Moon Series.
- For those retired, we offered our Thursday Morning Hiking Series, as well as our Saturday and Sunday Cape Hikes.

Finally, it is about engaging our participants in their preferred outdoor interests. To that end, we also have a robust Biking Committee that put on 28 bike rides this year, as well as a budding Paddling Committee. We organize Ski Weekends, Trails Work events, Conservation Talks and much more.

Because we are a great example of a chapter that provides “Just Right” activities, we are often held up by AMC staff as an example. It is not only that we are a mid-sized chapter that puts on more activities than many larger chapters, but also because we offer such a wide range of different types of activities.

Each SEM Committee has contributed to making our Chapter welcoming and inclusive. Please read the individual committee reports and be inspired by their passion and terrific work.

I also want to commend our Executive Committee. They organized several signature events, including a Leadership Appreciation Day in the spring and a Chapter Hut Weekend at Cold River Camp in the fall.

We packed Cold River Camp, and I was thrilled that we had mothers with babies, children, pre-teens, teens, and younger adults attending.

Our youngest “future hiker” was a nine-month-old and our most-senior participant was 84 years old.



Chapter Hut Weekend | Photo by Srini Iyengar

I am incredibly proud of our Executive Committee, they are a high-performing team. AMC is transitioning back to growth and going through significant change in the process.

During this time, your Executive Committee represented the Chapter’s needs effectively, promoted AMC’s mission diligently, and got the work done efficiently. It has been a joy to work with them.

This is my second and last annual chair report. It has been my pleasure to serve the Chapter and work with so many terrific volunteers. Thank you.

Be Outdoors and I'll see you on those Happy Trails!

*Respectfully submitted,*  
*Paul Brookes*  
*AMC-SEM Chapter Chair*

# Treasurer's Report

EARL DEAGLE, CHAPTER TREASURER

## Overview

We closed out calendar year 2023 with our chapter achieving all our major goals while also significantly underrunning our expense budget for the year, setting us up to begin 2024 with a healthy SEM checking account balance approaching \$20K.

Effective January 1st, 2024 we successfully transitioned from Citizens Bank to our new checking account with Chase Bank, helping AMC to move towards its goal to get all areas of AMC onto one common banking platform. To pull the curtain down on 2023, in early February '24 we submitted all required SEM financial information to support the 2024 AMC Annual Audit.

As we discussed early last November at our 2023 Annual Meeting, we approved our current year 2024 Budget that assumed we would again, like 2023, run a deficit for the calendar year and "burn down" our bank account balance by over \$9K. As we look ahead to Q4 2024 it appears that our expenditures for the year will again be lower than budgeted with an outlook for a total year budget deficit in the \$5k to \$6K range.

Our plans and financial budget for 2025 have been approved by the SEM Executive Committee and will be submitted to AMC by November 1st. Looking forward, AMC has confirmed the following financial approach regarding Chapter financial management policy:

- Chapters are requested to submit balanced budgets:
  - Revenue (Dues Allocations + Chapter generated Revenue) Less Expenses = \$0
- Bank Checking Accounts and Cash Reserve Accounts will be re-sized periodically to ensure Chapters have sufficient funds to meet Chapter cashflow needs throughout the year
  - Dues allocations to the Chapters will be made earlier in year to also ensure cash flow coverage
- Invested Reserve Accounts will be phased out
  - In 2024, each chapter had 96% of its Invested Reserves, totaling \$1M across all chapters, reassigned to AMC organizational initiatives.

## 2024 Significant Accomplishment

As most members know, SEM had long required participant fees for various events and activities (Training Classes, Hiking / Skiing Weekends, Annual Meeting etc.) to be paid using personal checks—not the most efficient process for the member or the Treasurer.

We had set a goal in 2024 to provide SEM membership the capability to make payments for various participant events by using personal credit cards.

In Q1 2024, we approached AMC Finance to discuss options for using a third-party credit card processor (like PayPal). We found that AMC, in getting ready for Outdoors Connector, had already gone out and secured the company STRIPE to be AMC's third-party credit card processor going forward.

AMC Finance was more than happy to set SEM up on STRIPE so we could provide feedback on the process. Since May of this year, we have used STRIPE to provide credit card payment capability on the following events: Map & Compass Training, Chapter Hut Weekend at Cold River Camp, Craftsbury Ski Weekend, Leadership Training (Fall Session) and SEM Annual Meeting.

As of October 1st, we have processed over 100 credit card transactions totaling approximately \$24K of revenue. It appears providing this capability has been a resounding success!

*Respectfully Submitted*  
Earl Deagle  
AMC-SEM Treasurer



# Biking Report

BILL TRIMBLE, BIKING CHAIR



Gooseberry Island, Westport, MA | Submitted by Jeannine Audet

A big thank you to all our amazing volunteers for planning and leading the rides this past year. We currently have seven active bike leaders and are excited to potentially add two more next year, with two leaders-in-training.

The Biking Committee led twenty-nine bike rides this year, covering locations from Providence (RI) and Fairhaven to Holliston and the Cape, and many places in between. We even braved the cold for a late December ride along the East Bay Bike Path, though our main biking season runs from Spring to Fall.

In January Bill Trimble, our biking chair, prepared us for the biking season with a hands-on Emergency Roadside Bike Repair clinic. This featured flat tire repair, chain repair, brake and derailleur adjustment, and other useful topics. Additionally, in May, Bill assisted at the Chapter's Open House, and during the summer, the Committee put on two new member bike rides.



Saturday ride on the Northern Rail Trail | Submitted by Paul Brookes

As well as fifteen individual bike rides, the Biking Committee ran several popular biking series:

## Bike Path Series

This series of four rides in April was designed for new bike riders or those returning after a break. All the rides were on bike paths free of automobile traffic, taking participants along the East Bay Bike Path, New Bedford Blue Line, Blackstone Valley Bike Path, and Phoenix bike path.

## Biking and Brews

Our biking leaders organized a series of five “Biking and Brews” rides. These rides began and ended at a brewery, where participants could enjoy lunch, great camaraderie, and an optional brew. The rides included visits to Cisco Brewing in New Bedford, Mayflower Brewing in Plymouth, Shovelton Brewing in Easton, Berkley Beer brewhouse in Taunton and Buzzard Bay Brewing in Westport.



Riders at Buzzard Bay Brewing | Submitted by Jeannine Audet

## Easy Rider Thursday Series

Len Ulbricht organized four Easy Rider Thursday rides, designed for those seeking shorter rides at a slower pace, starting in May, all on bike trails, serving as a great follow-up to the April Bike Path Series. The rides included the Milford Bike Path in Holliston, a scenic ride along the Cape Cod Canal, a Sunset & Full Moon ride along the canal, and a trip along the Shining Sea Bike Path.

Continues on page 7

## BIKING REPORT, CONTINUED

### Multi-day Adventures

The biking committee supported three multi-sport/multi-day adventures. In July, a Cape Cod Multisport adventure, one day riding on the Cape Cod rail trail, and the other was kayaking in Cape Cod Bay in the morning, followed by a nature walk in one of the conservation areas in the afternoon.

In September, the biking committee provided biking as an option at Chapter Hut Weekend and in October, supported a hiking and biking weekend in the Berkshires where participants could choose from rides on the Harlem Valley Rail Trail (Saturday) and Ashuwillticook Rail Trail (Sunday). They could also participate in hikes or visit the local towns.

Our Volunteers of the Month this year were Jodi Jensen and John Nery—many thanks for all the bike rides you have led and your support for the biking community.

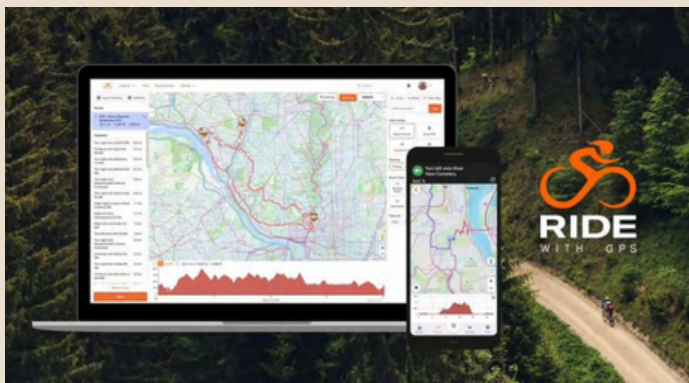


Photo & logo courtesy of Ride With GPS

Lastly, we continued our subscription for an annual club membership to Ride with GPS, making it available free to all current SEM members. The membership includes a comprehensive list of SEM rides in the region along with cue sheets and verbal turn-by-turn directions.

*Respectfully submitted,  
On behalf of Bill Trimble  
AMC-SEM Biking Chair*

# Cape Hikes Report

ROBIN MCINTYRE, CAPE HIKES CHAIR & JANIS DELMONTE, CAPE HIKES VICE CHAIR



Beech Forest Trail, Provincetown, MA | Submitted by Robin McIntyre

Our 2023-24 season was marked by a change in leadership. After seven years of guiding Cape Hikes through growth in hiker participation, number of leaders, and the variable landscape of the COVID pandemic years, Jane Harding stepped back as Cape Hiking Chair. All of us, both leaders and hikers, owe her much gratitude for her many years of capable service.

We continued to have many leaders stepping forward to offer another robust season. The Cape Hiking season runs from Labor Day to Memorial Day annually. We primarily schedule hikes on Thursdays, Saturdays, and Sunday afternoons. The Saturday hikes tend to be longer in length, 3-5 hours. Our hikers and leaders are primarily retirees but we welcome all ages.

This past season we offered 76 hikes. We had 966 participants in Cape Hikes over the course of our hiking season. An article in the Cape Cod Times in January 2024 brought in some new participants. We also developed a Cape Hike logo, Capers in the Woods, seen below.



We currently have 30 hike leaders, including those in training, with 20 actively leading during the past year. One individual who completed leadership training and is moving forward with her first pre-hike this fall.

We qualified three new leaders in 2023-24. We pull from a pool of about 60 individuals who participate in our hikes annually, with some newer participants.



Flax Pond Trail, Dennis, MA | Submitted by Robin McIntyre

Our challenges are dealing with an aging population of leaders and hikers, so safety and comfort become concerns, as does finding and scouting new places to hike that have adequate parking. We are continuously encouraging new candidates for leadership training.



Great Neck Audubon, Wareham, MA | Submitted by Robin McIntyre

Our Volunteers of the Month this year were Jane Harding and Richard Kaiser—many thanks for leading activities and stepping up to the plate often for Cape Hikes!

Continues on page 9



CAPE HIKES REPORT, CONTINUED

In August, a hike leader meeting was held at Fuller Farm with 18 leaders and one leader-in-training participating. Robin McIntyre and Janis Delmonte first thanked the leaders with a photo review of the hikes of the past year.



Thoreau's Seven Ponds, Wellfleet, MA | Photo by Keith Magyar

They also recognized the loss of one of our longtime Cape Hike leaders, AMC life member and friend, Nancy Wigley.



In loving memory of Nancy Wigley, January 14, 1933 – June 2, 2024

They reviewed relevant materials from Board emails, the volunteer newsletter, Communications Chair, and Cape Hike updates, in addition to welcoming leaders back to the 2024-25 Cape Hike season.

Cape Hikes has actively contributed to chapter-wide endeavors, with Robin McIntyre presenting at the spring and fall SEM Leadership training and doing the registration for the Chapter Hut Weekend.

In June, we partnered locally with the Barnstable Land Trust, offering a hike for learning how to read a trail map

and/or use AllTrails. We also offered a presentation on Hiking 101 with Janis Delmonte, Sandra Alisch, and Robin McIntyre participating.



Trish Crocker at Barnstable Land Trust Read-a-thon in October 2023 | Submitted by Robin McIntyre

Stay tuned for 2024.

Respectfully submitted,  
Robin McIntyre  
AMC-SEM Cape Hikes Chair

# Communications Report

LARA SZOTT, COMMUNICATIONS CHAIR

The Communications Committee consists of Cheryl Lathrop as Web Administrator—or as she likes to say—Webmistress, Maureen Walsh as Breeze Editor, Marie Hopkins as Blast Editor, Lisa Robitaille as Social Networking Administrator, and in January 2024, SEM welcomed Lara Szott as the Communications Chair.

With nearly a full team, the Communications Committee was off and running with a slew of projects to tackle:

## Promotional materials

AMC MarComms provided each chapter with Canva templates and guidelines. We were able to create new promotional materials, such as flyers and table signs, for various events like our signature Open House and popular Map & Compass workshop. The templates also helped us build creative social posts and stories, allowing us to further our social presence while maintaining a sense of continuity.



Earn a Patch with SEM one-pager and examples of table signs created for SEM Annual Open House using AMC approved fonts and colors



2024 SEM Open House flyer with coordinating social media and website assets designed based off templates AMC MarComms supplied to Chapters

## Creative and engaging content

When it comes to creating engaging content, Lisa never falls short. She utilized her social media skills to build various reels for Instagram and Facebook.

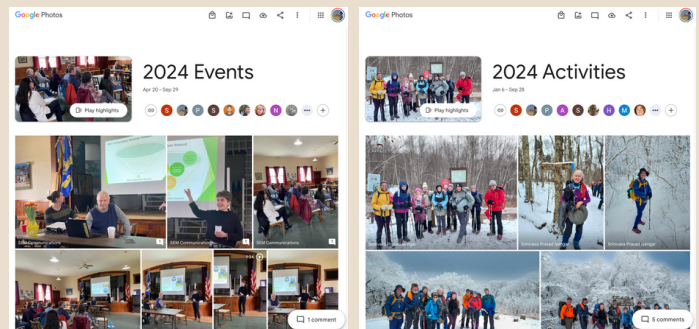


Screenshots of AMC-SEM Facebook and Instagram pages

On Instagram, her [Winter Hiking Series reel](#) reached 2,368 accounts (52 followers, 2,316 non-followers), had 1 share, and we gained 1 new follower from it. On Facebook, her [Leadership Training reel](#) reached 186 accounts (93% followers, 7% non-followers) and had 2 shares. It's creativity and reach like this that helps build the AMC-SEM community.

## Google photo albums

To help build our promotional materials and social content, we thought it would be good to have a central location for participants to upload photos and videos to. In June, we created two Google photo albums, one for [Activities](#) and another for [Events](#). Our hope is that these will drive engagement by allowing members to comment on uploads, reminisce on past outings, and assist in the collection of media.



Screenshots of the two new Google photo albums

Continues on page 11

## COMMUNICATIONS, CONTINUED

### Media policy

As we were in the conceptualizing stages of the Google photo albums project, we knew we needed a formal media policy. Once drafted and approved, we published it on our website in a series of locations, along with a guide on how to use the Google Photo albums. The media policy ensures each participant knows what the photos and videos might be used for and considers the participants' well-being and preferences. The AMC-SEM Media Policy reads as follows:

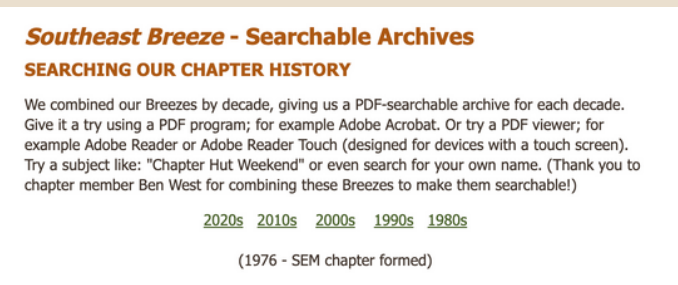
*'We take the privacy of our members and all individuals seriously. All event leaders are required to make all participants aware of our media policy prior to the start of an event.'*

*By sharing photo/s, video/s and any other content, you grant us permission to use it in any marketing materials, website and social content or other creative projects we develop. If there is an individual who wishes to remain anonymous, please make us aware so we do not name, or post any content, of that individual. Also, some individuals may not want their photo taken; some will want to be excluded from photos altogether. SEM will honor these requests and not post photos of individuals who have made this request explicit.*

*Your privacy is valuable to us and we appreciate you helping us spread the word and mission of our chapter. If you have any questions or concerns, please contact the Communications Chair at [communicationschair@amcsem.org](mailto:communicationschair@amcsem.org).'*

### Searchable archives

We understand the importance of preserving the legacy of the AMC-SEM community. One way we can do that is by ensuring our Breeze, which has been published for over 40 years, doesn't get lost in history and continues to be a resource. Ben West, a friend of SEM, took the initiative of combining our Breezes by decade, giving us a PDF-searchable archive for each decade. Once Ben was done conquering this feat, Cheryl put it into action by updating our [website](#) and making sure



Screenshot of searchable archives on AMC-SEM website

everything functioned correctly. Now, visitors can sift through the Breezes either individually by month and year, or by decade. Whether someone wishes to take a trip down memory lane, or wants to reference how previous events like workshops or chapter hut weekends went, they can now do so conveniently.

### Regular responsibilities

All of these accomplishments would not have been made possible if it weren't for the dedication and expertise of our team. On top of these achievements, are our regular responsibilities. Maureen meticulously formats and edits our monthly "Breeze", Marie handles all server communications, Lisa continues to be on top of posting photos and updates to a larger audience, and Cheryl actively ensures our website is consistently up to date and working properly.



Screenshot of AMC-SEM business card with QR code

Each volunteer contributes significantly in their own way, and I'm excited to see what lies ahead—especially because in October 2024—we welcomed Briana Butterworth as the Communications Vice Chair. I have no doubt that she will be a valuable asset to the team as we continue to further our SEM communication efforts.

I want to extend a special thank you to our Executive Committee, activity leaders, and members. Your passion to build community, provide support, and share your stories is what makes SEM so special.

*Respectfully submitted,*  
*Lara Szott*  
*AMC-SEM Communications Chair*

# Conservation Report

ZOE RATH, CONSERVATION CHAIR

We had a good array of activities in the past year, including regular Zoom meetings with the Conservation Committee, where we discussed goals and upcoming events.



Cuffee Hill and Black Pond Bog Walk  
| Photo by Zoe Rath

In October 2023, we hosted a well-attended hike led by Will Saunders, a Conservation Agent for the Town of Norwell, to Cuffee Hill and Black Pond Bog Walk.

The North and South Rivers Watershed Association describes Black Pond as a kettle hole pond, created tens of thousands of years ago by a large chunk of

melting glacier. Also in October, we held a Zoom event, “Day Hiking New England, with Author Jeff Romano” when we learned about long and short hikes throughout New England.

In April 2024, we had a panel event featuring four speakers for Earth Day, and in August 2024, we held a trash clean-up in the Quincy Quarries area of the Blue Hills. A goal for 2025 is to plan a trash clean-up event once a quarter.



Blue Hills trash clean up | Photo by Paul Brookes



Blue Hills trash clean up | Photo by Paul Brookes

We also want to encourage more carpooling to AMC activities. To help with this initiative, we created a [carpooling spreadsheet](#) for those interested in carpooling to an event. Not only do you save on carbon emissions, but you can also make new friends!

## Earth Day panel: A Conversation on Conservation

At this event, our speakers presented about international trail work adventures (Kristine H Atkinson), AMC conservation advocacy and trail work (Rae Ettenger), proper identification and removal of invasives (Will Saunders), as well as the environmental impact of animal agriculture (Jessica Rath).



Earth day panel | Photo by Zoe Rath

Paul Brookes, SEM Chair, started the day with a brief introduction reminding us that the very backbone of AMC is the enjoyment, conservation, and protection of

Continues on page 13

CONSERVATION REPORT, CONTINUED

the outdoors. These presentations inspired and sparked further conservation conversations. You can read more about the event in [Breeze May \(2024\)](#). The Conservation Committee hopes to repeat this panel event in 2025 with different speakers.



Earth day panel | Photo by Zoe Rath

Conservation Corner

The Conservation Committee contributed monthly articles to the *Breeze* newsletter for the “Conservation Corner,” including topics on decreasing your carbon footprint, saving energy, green gifting, highlighting Maine wilderness, recycling, and composting.

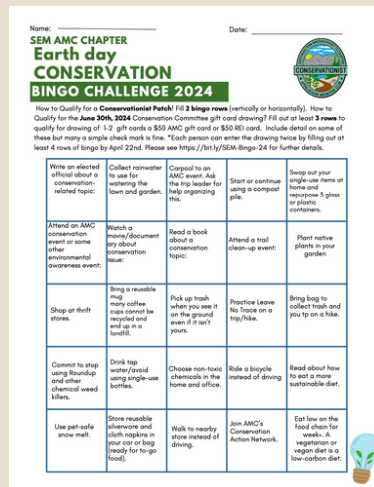
Conservation Patch: Conservation Bingo

One of our big goals this year for the Committee was to revitalize the Conservation Patch, seen to the right, which was first established in 2015. To bring it back to life, we workshopped the Conservation Bingo sheet at the monthly Conservation Committee Zoom meeting. In order to earn the patch, individuals must complete the actions in two horizontal rows, two vertical rows, two diagonal rows, or any combination and email a PDF or JPG file of the bingo sheet to [conservationchair@amcsem.org](mailto:conservationchair@amcsem.org).



The new sheet challenges folks to commit to the environment by making easy changes like driving less,

eating less meat, carpooling to events, picking up trash, and more.



Screenshot of Conservation Bingo sheet

Although only eight bingo cards were completed, we are still proud of our efforts, and we will continue to make the patch and bingo sheet a goal for the upcoming year. The most important thing is that every habit changed, and every action taken, creates a more sustainable environment and health benefits for us all and our families.

You can still play Conservation Bingo to earn the conservation patch by downloading it [here](#) or from the AMC-SEM Conservation webpage.

Respectfully submitted,  
Zoe Rath  
AMC-SEM Conservation Chair

We gave out over 30 bingo sheets and promoted them in several *Breeze* issues and at our April panel speaker event. Additionally, we added a fun incentive —folks who filled out three horizontal, vertical, or diagonal rows could enter to win a \$50 AMC or REI gift card.

# Diversity, Equity, and Inclusion Report

## JENN WONG, DIVERSITY, EQUITY, AND INCLUSION CHAIR

This year, the AMC-SEM DEI Committee became a standing committee of the SEM Executive Committee (ExCom). With this decision, the DEI Committee became a voting participant of ExCom.

This is an important move forward and reflective of this Chapter's commitment to Diversity, Equity, and Inclusion. This change required an update to SEM Chapter Bylaws and will be voted on at the Annual Meeting in November. The updated bylaw language reads as follows:

*"The DEI Committee shall communicate AMC's DEI's goals, educational and training opportunities, and events to the SEM Chapter. The DEI Chair may facilitate discussion within the chapter on how to increase equitability and accessibility of chapter events, which all activity chairs should incorporate within their planning. The Mission Statement for the AMC-SEM DEI Committee is to promote an inclusive culture where diversity is valued so that previously underrepresented people feel encouraged to enjoy the outdoors with AMC."*

SEM's DEI Committee Chair has been attending AMC DEI Regional Representatives Committee meetings and contributing to the development of resources like the AMC DEI Roadmap, DEI Volunteer Committee Charter, and Code of Conduct. To make our collective DEI vision a reality, this policy and process work has been necessary.

In support of SEM DEI work, the Committee also:

- Hosted a table and co-led an "all ages-show and go" hike at SEM's Annual Open House;
- Incorporated inclusive, welcoming words and land acknowledgment when leading or co-leading activities;
- Promoted SEM's "gear lending" initiative and AMC's Outdoor Journey Fund;
- Reached out to affinity groups and initiated new conversations;
- Met with Madeline Sullivan-Hale and Marouane (Maro) Attiou of the [MA Department of Environmental Justice and Equity Office](#) to explore co-collaboration opportunities;
- Invited to present at a DEI Committee meeting Jireh Ishaazi, the Founder and Director of [Outside Mind](#), a Black-led nonprofit dedicated to fostering equitable outdoor recreation access and opportunity for

- racially underserved groups. Future meetings to plan co-events for 2025 are in the works.



Jenn Wong and Lindsey Meyers-Bertone at DEI table at 2024 Open House  
Submitted by Paul Brookes

This year also saw SEM Leadership Training integrate DEI education in a new way, with a module of readings that required written responses and included interactive, onsite exercises.

To close out the year on a high note, SEM Chapter Hut Weekend hosted DEI Advocate, Educator, and Summits in Solidarity Board Member Niles Lashway. Niles gave an engaging, powerful presentation titled *Black in White: Being Black in the Wobanadenok White Mountains of the Abanaki Peoples in New Hampshire*. His impactful story brought lessons and learning to the audience and this Chapter and provided more building blocks for the path forward and work ahead.

In November, as I become Chapter Vice Chair, the DEI Committee Chair and Vice Chair positions will be open. The posting is on the [AMC site](#) and interested individuals are encouraged to apply. Volunteers, too, will be needed to continue to carry out SEM's DEI Committee vision and mission.

With key DEI advancements made on both the Chapter and AMC levels this past year, there is a solid foundation to move SEM DEI's commitments forward and create lasting change.

*Respectfully submitted,*  
Jenn Wong  
AMC-SEM DEI Chair  
Maureen Kelly  
AMC-SEM DEI Founding Chair and Committee Member

# Education Report

ANNE DUGGAN, EDUCATION CHAIR & SRINI IYENGAR, EDUCATION VICE CHAIR

The Education Committee has been working hard in 2024, continuing its mission of educating new leaders!

We held a full-day Leadership Training session in May in Foxboro, Massachusetts. We had 23 participants registered for this training, of which half were from the SEM chapter, two from Cold River Camp, and the rest from other AMC chapters. The program was a huge success.

Furthermore, due to unprecedented demand, the Education Committee conducted another full-day leadership training session in October in Rochester, Massachusetts. We had 12 participants, and this training session was conducted in Anne Duggan's beautiful yard and barn.



October Leadership Training | Submitted by Srinii Iyengar

Thanks to our facilitators: Paul Brookes, Robin McIntyre, Diane Hartley, Paul Audet, Jeannine Audet, Bill Belben, Jenn Wong, Eva Borsody Das, Tracy Hawes, Diane Simms, and all other SEM leader mentors.

The Education Committee also thanks Sujatha Srinivasan for helping with the slides, Doug Griffiths, Eva Borsody Das, and Diane Hartley for reviewing the role-play scenarios.

In June, the Education Committee put on a two-day Map & Compass workshop. We had 14 students, who, over the course of the weekend, learned beginner and intermediate skills, culminating with groups finding flags

both on-trail and off-trail where the location was shown on a topographical map that does not show the trails. Small-group training was provided by our teachers Paul Brookes, Varam Saripalli, Lindsey Meyers-Bertone and Doug Griffiths.



June Map and Compass | Submitted by Srinii Iyengar

In October, the Committee requested Srinii Iyengar and Robin Melavalin to do a presentation on "Climbing Mt. Kilimanjaro in Tanzania." It included essential details on climbing tips, what to pack, personal experiences, and several breathtaking photographs taken by Srinii during his climb of Mt. Kilimanjaro.

Robin Melavalin is leading a hike to Kilimanjaro through AMC Adventure Travels at the end of August 2025. Learn more about this trip by clicking [here](#).

*Respectfully submitted,*  
Anne Duggan  
AMC-SEM Education Committee Chair  
Srinii Iyengar  
AMC-SEM Education Committee Vice Chair

# Hiking Report

BILL BELBEN, HIKING CHAIR



Glen Boulder | Photo by Bill Belben

The SEM year started in November 2023 with our Winter Hiking Workshop. Our workshop continues to be very popular as 34 participants attended.

The winter hiking series was equally popular with 69 participants attending at least one of the hikes. Perhaps even more amazing was that we have 24 leaders helping out to put on the series. In addition to our monthly hikes, we also held several Wachusett Mountain hikes and snowshoe hikes to help the participants gain experience using their microspikes and snowshoes.

The final hike in March was an overnight at the Lonesome Lake Hut. Treacherous trail conditions prevented the planned hike to the Kinsmans, but the hearty group of 20 still had an amazing experience.



Summit of Mt Moosilauke, NH | Photo by Unknown

Locally, we continued to offer the Winter Blue Hills Trail Trace Series. While winter conditions continued to evade us throughout the series, the 64 participants and 15 leaders would not be deterred and were able to complete 75 unique miles of trails over the 12-week series.

Not all hiking events were in search of winter conditions as we also had a multi-day trip to an early former duck hunting cabin along the south shore of West Tisbury on Martha's Vineyard (MV).

Organized by MV resident Nancy Tutko, the group of eight explored the Chilmark Moraine, Aquinnah's Gay Head Cliffs, and Chappaquiddick Island. Later, we had a cooking lesson from Srini Iyengar.



Poucha Pond, Chappaquiddick, Edgartown, MA | Photo by Nancy Tutko

The spring season was extremely active in the Blue Hills. We held both weekly intermediate and moderate hike series along with a new bi-weekly introductory and refresher hiking series led by Ken Cohen and Larry Petrone.

Over 56 people attended at least one hike with hikers, averaging six events. The series culminated with an end-to-end hike of the Blue Hills Skyline Trail followed by a celebration at Trillium.

Thursdays were also a very popular day for hiking activities, starting with a Thursday morning series that ran from September through May. Managed by Walt

*Continues on page 17*



HIKING REPORT, CONTINUED



South Skyline Blue Hills | Photo by Bill Belben

Granda, and led by many of our leaders, we had 39 hikes that took us to 21 different woods, parks, and reservations throughout Southeastern Massachusetts.

Our Thursday evening Trail Trace the Blue Hills series continued for the 19th season. The season ran from April through September with eight leaders and one Leader-in-Training leading 23 hikes with an average of 16 participants per event. Over the course of the season, the series covered over 90 miles of trails. In August, they had their much-anticipated potluck picnic.



Great Blue Tower | Photo by Ron Cadillac

And last but not least, the always-popular Full Moon Hike series continued in November and ran through March for those wanting to experience night hiking under a full moon. These hikes average 25-30 people and are often wait-listed. Several other noteworthy events during the year include a series of hikes on the Mid-State Trail.

The hikes led by Kate Sullivan, Kathy Nash and Barry Young have covered 60 miles of the trail with plans to complete the remaining 30 miles by the end of the year.



Blue Hills Reservation | Photo by Zoe Rath

Additionally, there were several backpacking trips on the AT Long Trail and in the White Mountains. We have seen a steady increase in the number of people working towards becoming certified to lead hikes. Since November of 2023, we have certified nine Level 1 Leaders, seven Level 2 Leaders, two Level-3 Leaders and one Backpack Class 1 Leader.



Mid-State Trail | Photo by Kate Sullivan

We continue to have a steady stream of Leaders-in-Training that we hope will work towards certification and become active leaders for our Chapter.

As the year comes to a close, we completed 234 hiking events that broke down as 192 local hikes and 42 destination hikes.

*Respectfully submitted,  
Bill Belben  
AMC-SEM Hiking Chair*

# Membership Report

NANCY PIEDRA, MEMBERSHIP CHAIR & STACEY STEELE, MEMBERSHIP VICE CHAIR

Over the past year, the Membership Committee has focused on engaging new members and strengthening the Chapter's community through various initiatives and outreach efforts.

## Open House

The Committee successfully organized an Open House, providing an excellent opportunity for prospective, new and long-standing members to meet, learn more about AMC, and get involved in upcoming events. The event was well-received and generated new interest in the Chapter's activities. After the Open House, the Membership Committee sent a personalized email blast to all new members who had joined within the prior 90 days, welcoming them to the Chapter and providing suggestions for how to get started.



2024 Signature Open House | Photo by Paul Brookes

## Membership Outreach

An analysis was conducted of hike leaders and frequent hike participants to ensure their membership was active within the SEM Chapter. For those whose membership wasn't associated with the Chapter, personal outreach was made to invite them to officially join. This effort helped strengthen the sense of community and ensured that more participants are connected with the Chapter's activities.

## New Member Initiatives

The Committee organized several new member hikes at Walden Pond, Borderland State Park, and along the Bay Circuit Trail. These hikes were designed to introduce new

members to the Chapter's activities while fostering a welcoming environment. Participation was strong, and feedback was positive, with attendees expressing excitement about future hikes.

The Committee also encouraged leaders to organize additional new member activities, a key initiative that was met with great success. Many leaders stepped up to organize new member hikes, bike rides, paddles and social events which consistently attracted high attendance, demonstrating growing interest from new members in becoming active participants in the Chapter.

## New Leadership Support

The Committee is pleased to welcome Stacey Steele as the new Membership Vice Chair. Stacey is eager to assist with membership efforts, and her enthusiasm will be a valuable asset as the Committee continues its work to strengthen the SEM community.

Through these initiatives, the Membership Committee has worked to increase member engagement, foster a strong sense of community, and provide opportunities for new members to feel welcomed into the AMC-SEM family. With Stacey's support, the Committee looks forward to building on these successes in the coming year.

*Respectfully submitted,*  
Nancy Piedra  
AMC-SEM Membership Chair



Membership table at 2024 Open House | Submitted by Paul Brookes

# Paddling Report

CHARLIE ASHMAN, PADDLING CHAIR

SEM added a new Paddling Chair in August and will be focused on increasing paddling activities during the 2025 season. SEM needs an interested member to serve as a Paddling Vice Chair.

While SEM-organized paddles were fewer than hoped for in 2024, paddles began to increase in the later part of the season, with several paddles on the Charles River. In August we paddled from the Historic Boathouse in Newton to the Moody Street Dam in Waltham, where the paddlers enjoyed sunny outdoor seating at the In a Pickle restaurant before paddling back to Newton.



Moody Street Boathouse | Submitted by Charlie Ashman

Also in August, SEM hosted a kayak rescue skills workshop at Dug Pond in Natick. The workshop devoted several hours of one-on-one practice of kayak assisted and self-rescues. In the photo below, they are practicing a new skill called the Assisted Chapter Chair Rescue.



Paul Brookes assisted by Sally Heaney | Submitted by Charlie Ashman

For the winter season, SEM is investigating the availability of indoor pools that could accommodate paddling rescue skills practice. In September, Ann Hargleroad was selected as the AMC-SEM Volunteer of the Month for her contributions to paddling.



Ann Hargleroad paddling | Submitted by Charlie Ashman

One of the most scenic paddles this year was perhaps the latest, a 7.5-mile trip on the Saco River near Fryeburg, ME, during the Chapter Hut Weekend at Cold River Camp.



Group of happy paddlers | Submitted by Paul Brookes

To better serve all SEM members interested in paddling, we will be seeking out input and feedback so that a sufficient variety and quantity of paddles, and skills workshops are organized in the coming paddling seasons.

Respectfully submitted,  
Charlie Ashman  
AMC-SEM Paddling Chair

# Skiing Report

DIA PRANTIS, SKIING CHAIR & MIKE MICHALEWICH, SKIING VICE CHAIR

While local skiing in southeastern Massachusetts is sadly nearly non-existent, we did have two wonderful weekends in New Hampshire this year.

January started with our annual tradition, a trip to the Mountain Fare Inn in Waterville Valley. We had 25 participants and the entirety of Martin Luther King weekend to enjoy each other's company, being in New Hampshire, the environment of the inn, and excursions outside.

What do you call cross-country skiing when you have rain? Cross-training! So, as Saturday started with a steady rain, we had a leisurely morning and then, as it tempered off, our group planned a hike toward Greely Ponds. We got in a 5-mile outing before the afternoon brought a combination of rain and hail.

We were grateful to have gotten outside but also happy to return to the warmth of the fireplaced living room of the inn! On the next day, we decided to try cross-country skiing, and the trails were surprisingly well-groomed. We skied nine miles in the upper area of Livermore Road and then went over to Lower Osceola. It was wonderful to be out all day and to return to the inn for a warm dinner buffet that many participants contributed to. Monday was a short but beautiful loop hike of the Smarts Brook trail before we all departed for home.

In February, we tried a new location, the Harvard Outdoor Cabin, which is conveniently located on Route 16 near Jackson and North Conway. It was comfortable in that it had a kitchen; this time, it was Presidents' weekend.



Group dinner at Harvard Outdoor Cabin featuring Annmarie McKee, Bill Swanton, Dia Prantis, Paul Audet, Michelle Martinat, Cynthia Sexton, Paul Brookes and Jeannine Audet | Photo by Dia Prantis



Harvard Outdoor Cabin trip | Photo by Dia Prantis

On Saturday, while the snow was a bit light, our group broke into two, some choosing snowshoeing and some choosing to cross-country ski at the Jackson Ski Center. Both groups had enjoyable afternoons.

On Sunday, we chose to go to Bear Notch Ski Center, another favorite in the area, and we skied from the center toward town along the rail line that is not used in the winter. We skied through both woods and wide open spaces, enjoying the scenery and grateful once again for the better than expected conditions.

On Monday, we ended our weekend with a jaunt to Diana's Bath in microspikes. The ice-covered rocks and falls were quite stunning.

*Respectfully submitted,  
Dia Prantis  
AMC-SEM Skiing Chair*

# Trails Report

STEVE SCALA, TRAILS CHAIR & LARRY PETRONE, TRAILS VICE CHAIR

Our Trails Committee was busy working on several projects this past year as well as renewing the ranks of trails volunteers.

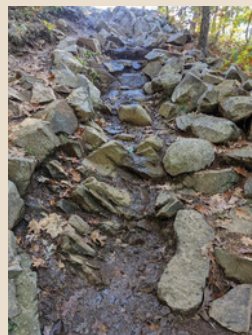
Last fall, the Trails Committee led a crew to work on some less-used paths in F. Gilbert Hills/Foxboro State Forest. We cut brush to make the trails wider and easier to follow, and removed tree limbs and small downed trees.



F. Gilbert Hills requires more work than we encounter in other locations and has fewer volunteer groups who focus on it. AMC-SEM trail work volunteers periodically hike on F. Gilbert Hills trails so that we can determine where we need to focus in the future.

Left: F. Gilbert Hills trails  
Submitted by Steve Scala

Also in the fall, AMC-SEM trails volunteers did maintenance on SEM's adopted portion of the Skyline trail in the Blue Hills. There, we cleaned water bars, insured clear paths around wet areas, and removed tree limbs.



Trail volunteers at Skyline trail | Submitted by Steve Scala

We started 2024 with a trails event near Houghton's Pond on a relatively warm but damp day. Despite less-than-ideal conditions for trail work, we had a great volunteer turnout. And everyone's help was needed given that there was much to do as the trails were not

sufficiently clear and a good bit of trash was scattered about. That event was followed a couple of months later when we worked on a trail near Brookwood Farm. These trails appear less-used but are wonderful paths for a short walk.



Submitted by Steve Scala

More recently, we assisted the AMC-SEM Conservation Committee during a trash pick-up event near Chickatawbut Road. Thanks to a terrific turnout of volunteers, we collected about 10 full bags of trash.

For his sustained and important efforts for the Trails Committee, AMC-SEM Trails Committee Vice Chair Larry Petrone was recognized as AMC SEM Volunteer of the Month in December 2023.

Overall, it was a productive year for the Trails Committee, and we thank those who supported our efforts. We have several trail work activities planned in the upcoming year.

Please consider joining us to improve the trails we all enjoy.

*Respectfully submitted,*  
Steve Scala  
AMC-SEM Trails Chair

# 20s and 30s Report

DAVE MACDONALD, 20S AND 30S CHAIR

This year brought significant changes in leadership for the 20s and 30s Committee, during which a new chair and vice chair were appointed. Dave MacDonald was appointed as the 20s and 30s Committee Chair in March of 2024, and Jeff Gilbert was appointed as the 20s and 30s Committee Vice Chair in August of 2024.

The 20s and 30s Committee focused primarily on fostering engagement within the 20s and 30s community through social events. These social events enhanced awareness of the Appalachian Mountain Club (AMC), encouraged participation in AMC activities, and promoted AMC membership among younger adults.

## Social Events

In the 2024 calendar year, six social events were successfully organized across Massachusetts and Rhode Island by Dave MacDonald. These events were designed to engage with members of the 20s and 30s community, as well as to promote AMC membership and awareness. At these social events, attendees were encouraged to participate in future AMC activities.

These social events were strategically held in different geographic regions across Massachusetts and Rhode Island. Social events in Massachusetts took place in Boston and Mansfield, while those in Rhode Island were held in Providence.

The social events incorporated summer and fall themes to attract participation and engagement. A summer social event was held in Boston, Massachusetts, at the Franklin Park Zoo for a Boston Lights event.

In Providence, social events took place at the WaterFire Festival in downtown Providence, as well as at the Jack O'Lantern Spectacular event at Roger Williams Zoo. In Mansfield, social events included Musical Bingo at Geno's Cafe, as well as a Corn Maze and Ice Cream Social at Flint Farm.

## Leadership Development

In terms of leadership development, Dave MacDonald and Jeff Gilbert actively participated in various AMC events to enhance their leadership skills and knowledge.

Throughout the year, Dave MacDonald attended various AMC events, such as the AMC-SEM Chapter Open House at Borderland State Park in May; AMC Leadership Training in May; AMC Map & Compass workshop at Blues Hills Reservation in June; AMC new members hike at Blue Hills Reservation in July; and AMC Wilderness First Aid training in October. Similarly, Jeff Gilbert attended various AMC events such as Leadership Training in September, and Wilderness First Aid training in October.

## Future Goals

As we transition into 2025, there will be commitments to further enhance AMC engagement strategies with young adults. For future goals, Dave MacDonald and Jeff Gilbert aim to become hike leaders, with plans to potentially expand their leadership roles to biking and paddling.

Additionally, Dave MacDonald and Jeff Gilbert will seek to identify and mentor other potential activity leaders to enhance participation and foster a vibrant young AMC community. This will allow for an offering of a broader range of outdoor activities for the 20s and 30s community.

The commitment to connecting with younger adults has proven successful in 2024, laying the groundwork for a bright, engaged community, that is passionate about the outdoors. Dave MacDonald and Jeff Gilbert look forward to continuing this momentum in the coming year and genuinely appreciate the involvement of all our dedicated 20s and 30s members.

*Respectfully submitted,*  
*Dave MacDonald*  
*AMC-SEM 20s and 30s Chair*

# 2024 Signature Events



## Recognizing our community.

Chapter Signature Events are events overseen by the Executive Committee. They are posted regularly on the SEM website, our social media platforms, and in our *Breeze*. All events, except the *Chapter Chairs Retreat* and *Leaders Appreciation Celebration*, are open to the public.

### March 23

Executive Committee In-Person Planning Day  
Pocasset Community Center, Pocasset, MA



### June 29

*Leaders Appreciation Celebration*  
Jeannine & Paul's house



### May 18

Spring Leadership Training  
F. Gilbert Hills, Foxborough, MA



### September 27 - 29

Chapter Hut Weekend  
Cold River Camp, Chatham, NH



### May 18 - 19

*Chapter Chairs Retreat*  
AMC Harriman Center, Haverstraw, NY



### October 5

Fall Leadership Training  
Anne Duggan's house



### May 25

Open House  
Borderland State Park, North Easton, MA



### November 9

Annual Meeting  
Bay Pointe Club, Buzzard Bay, MA



### June 1 - 2

Map & Compass Weekend  
Blue Hills Reservation, Canton, MA

### December 10

Executive Committee Holiday Party  
Mama Mia's, Plymouth, MA

# Summary

## COMMUNITY

**4K**  
SEM MEMBERS

**3K**  
MONTHLY UNIQUE WEB VISITORS

**1.8K**  
FACEBOOK FOLLOWERS

**1.3K**  
MEETUP MEMBERS

**8**  
SCHOLARSHIPS

## EVENTS

**413**  
EVENTS ORGANIZED

**6**  
20S AND 30S SOCIAL EVENTS

**6**  
SKILLS TRAINING WORKSHOPS

**4**  
CONSERVATION EVENTS

**4**  
TRAILS WORK EVENTS

## ACTIVITIES

**258**  
HIKES

**96**  
CAPE HIKES

**29**  
BIKE RIDES

**4**  
PADDLES

**4**  
SKI TRIPS

### New in 2024

**Diversity, Equity, and Inclusion** becomes a standing committee and is incorporated into Leadership Training

**AMC-SEM media policy** was established to account for each participant's privacy and preferences

**Credit card payments** are now accepted as a form of payment for various events

**Conservation bingo cards** were reimagined and circulated for the first time since 2015. Thirty cards were distributed







**Your connection  
to the outdoors.**

**APPALACHIAN MOUNTAIN CLUB  
SOUTHEASTERN MASSACHUSETTS CHAPTER**

**2024 ANNUAL REPORT**